

# ANCHOR LÅS

Certified High Security Padlocks. For use with oval cylinder.

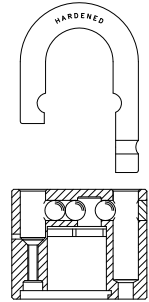
## Padlock 840-4 B27 / B50

EN 12320 Grade 5



Certified by SBSC in Sweden.  
Certificate No 00-589.

- A padlock for maximum security applications. 80 mm case-hardened steel padlock, shackle dia 15 mm.
- For use with oval cylinder, also available for use with "snowman" cylinder.
- The lock cylinder is protected by a hardened 5 mm thick protection plate.
- Different types of protection plates are also available.
- Double locking hardened stainless steel ball bearing.
- Option: Padlock 840-4 L, removable shackle.



Padlock 840-4 L

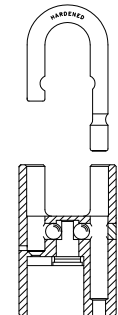
## Padlock 834-4 B28

EN 12320 Grade 4



Certified by SBSC in Sweden.  
Certificate No 98-762.

- A padlock with raised shoulders to provide extra protection. 60 mm case-hardened steel padlock, shackle dia 11 mm.
- Applications: Train wagons, trucks, warehouses and heavy sliding doors etc.
- For use with oval cylinder.
- Double locking hardened stainless steel ball bearing.
- Option: Padlock 834-4 L, removable shackle.



Padlock 834-4 L

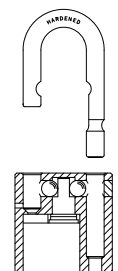
## Padlock 830-3 B28 / B50

EN 12320 Grade 4

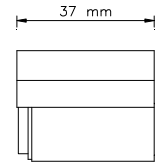
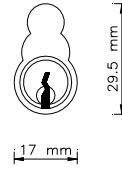
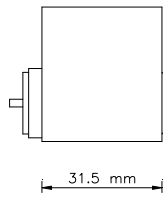
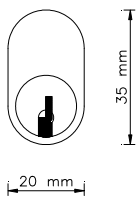


Certified by SBSC in Sweden.  
Certificate No 98-762.

- Extra strong padlock for storage room doors, gates, protective bars, construction equipment and remote storage areas.
- 60 mm case-hardened steel padlock, shackle dia 11 mm.
- For use with oval cylinder.
- Double locking hardened stainless steel ball bearing.
- Option: Padlock 830-3 L, removable shackle.



Padlock 830-3 L

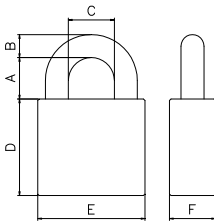


The ANCHOR LÅS High Security Padlock 840-4, 834-4 and 830-3 are made for use with oval cylinder.

The ANCHOR LÅS High Security Padlock 840-4 and 802-2 are made for use with "snowman" cylinder.

Model Number	EN Grade	Swedish Padlock Class	Body					Shackle					Keying	
			Material	Finish	Thickness mm (F)	Thickness mm (E)	Height mm (D)	Material	Finish	Diameter mm (B)	Clearance mm (A)	Clearance mm (C)	Oval cylinder	"Snow-man" cylinder
840-4	5	4	HS	CH	30	80	65	HS	CH	15	27	40	●	●
840-4 B50	5	4	HS	CH	30	80	65	HS	CH	15	50	40	●	●
834-4	4	3	HS	CH	25	60	94	HS	CH	11	28	28	●	
830-3	4	3	HS	CH	25	60	62	HS	CH	11	28	28	●	
830-3 B50	4	3	HS	CH	25	60	62	HS	CH	11	50	28	●	
802-2	3	2	BR	CH	20	46	61	HS	CH	8	25	24		●
802-2 B60	3	2	BR	CH	20	46	61	HS	CH	8	60	24		●
802-2 B110	3	2	BR	CH	20	46	61	HS	CH	8	110	24		●
802-2	2	1	BR	CH	20	46	61	SS	-	8	25	24		●
802-2 B60	2	1	BR	CH	20	46	61	SS	-	8	60	24		●
802-2 B110	2	1	BR	CH	20	46	61	SS	-	8	110	24		●

HS = case hardened steel      SS = stainless steel      BR = brass      CH = chrome plated



SECURITY GRADE EUROPEAN STANDARD EN 12320							
Requirements	1	2	3	4	5	6	
Minimum number of differs	300	1 000	2 500	5 000	10 000	20 000	
Pulling of shackle/staple	3	5	15	30	70	100	kN
Twisting of shackle/staple	40	100	200	450	1 200	2 500	Nm
Cutting of shackle/staple	6	15	25	35	70	100	kN
Blow on shackle/staple (weight/g x height/mm)			1 250 x 800	3 050 x 1 000	6 550 x 1 400	7 150 x 1 500	x 5
Test temperature			-20°C	-20°C	-40°C	-40°C	
Blow on lock body (weight/g x height/mm)			1 250 x 800	3 050 x 1 000	6 550 x 1 400	7 150 x 1 500	x 5
Test temperature			-20°C	-20°C	-40°C	-40°C	
Load on cylinder plug or locking mechanism			4	5	10	15	kN
Drilling				2	4	8	min
Sawing			1	2	4	8	min
Torque resistance of cylinder plug			5	15	20	30	Nm
Requirements	1	2	3	4	5		
SWEDISH PADLOCK CLASS SSF STANDARD							
Extra tests SSF padlock standard		1	2	3	4	5	
Lock picking and tampering		2 simple tools	2 simple tools	10 composite tools	10 composite tools	30 advanced tools	min
Attack with manual tools				5	10	15	min

Anchor Lås AB 2010/05

ANCHOR LÅS AB  
Box 3050  
SE-630 03 Eskilstuna  
Sweden

Tel: +46 (0)16-125280  
Fax: +46 (0)16-147923  
E-mail: info@anchorlas.se  
Internet: www.anchorlas.se