

# ANCHOR LÅS

## Chrome Plated Brass Padlocks

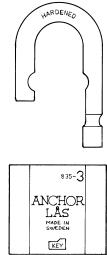
### Padlock 835-3 B25 / B50

EN Grade 3



Certified by SBSC in Sweden.  
Certificate No 04-597.

- An all-purpose padlock. 56 mm solid chrome plated brass padlock, shackle dia 11 mm.
- Ideal protection in harsh environments and corrosive atmospheres.
- For storage doors, gates, trailers, roller-shutter doors etc.
- Double locking hardened stainless steel ball bearing.
- Key removable only in locked position.
- Option: Padlock 835-3 L, removable shackle.



Padlock 835-3 L

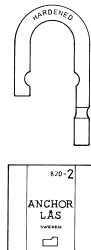
### Padlock 820-2 B25 / B60 / B110

EN Grade 3



Certified by SBSC in Sweden.  
Certificate No 04-597.

- An all-purpose padlock. 46 mm solid chrome plated brass padlock, shackle dia 8 mm.
- Shackle available in stainless steel and hardened steel.
- Ideal protection in harsh environments and corrosive atmospheres.
- For tool boxes, lockers, trailers, power station switches.
- Double locking hardened stainless steel ball bearing.
- Key removable only in locked position.
- Option: Padlock 820-2 L, removable shackle.



Padlock 820-2 L

### Padlock 810-1 B20 / B80

EN Grade 2

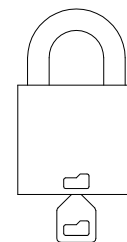


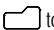
Certified by SBSC in Sweden.  
Certificate No 04-599.

- An all-purpose padlock. 39 mm solid chrome plated brass padlock, shackle dia 6,5 mm.
- Shackle available in stainless steel and hardened steel.
- Ideal protection in harsh environments and corrosive atmospheres.
- For cash boxes, tool boxes, lockers, power station switches.
- Double locking hardened stainless steel ball bearing.
- Key removable only in locked position.

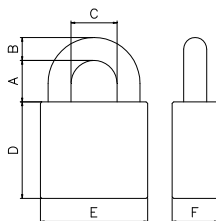


- The ANCHOR LÅS rotating detainer disc cylinder, 9 discs, 1.5 million different key combinations.
- The cylinder has no spring-loaded parts, which in other types of mechanism can cause malfunction through wear, dirt, moisture, corrosion or freezing.
- Maximum resistance against picking and manipulation.
- The lock cylinder offers extensive master-keying possibilities.
- All our padlocks and camlocks can be made to operate with just one key.
- Our extra strong key, thickness 3 mm, is made of nickel silver. The key is design patented.



Use symbol  to insert key in right position.

Model number	EN Grade	Swedish Padlock Class	Body					Shackle					Keying		
			Material	Finish	Thickness mm (F)	Thickness mm (E)	Height mm (D)	Material	Finish	Diameter mm (B)	Clearance mm (A)	Clearance mm (C)	Rekeyable	Non Rekeyable	Master-keying
880-4	5	4	HS	CH	30	70	63	HS	CH	15	27	29,5	●		●
880-4 B50	5	4	HS	CH	30	70	63	HS	CH	15	50	29,5	●		●
800-3	4	3	HS	CH	25	60	56	HS	CH	11	28	28	●		●
800-3 B50	4	3	HS	CH	25	60	56	HS	CH	11	50	28	●		●
833-3	4	3	HS	CH	25	60	88	HS	CH	11	28	28	●		●
835-3	3	2	BR	CH	20	56	51	HS	CH	11	25	27	●		●
835-3 B50	3	2	BR	CH	20	56	51	HS	CH	11	50	27	●		●
820-2	3	2	BR	CH	19	46	46	HS	CH	8	25	24	●		●
820-2 B60	3	2	BR	CH	19	46	46	HS	CH	8	60	24	●		●
820-2 B110	3	2	BR	CH	19	46	46	HS	CH	8	110	24	●		●
820-2	2	1	BR	CH	19	46	46	SS	-	8	25	24	●		●
820-2 B60	2	1	BR	CH	19	46	46	SS	-	8	60	24	●		●
820-2 B110	2	1	BR	CH	19	46	46	SS	-	8	110	24	●		●
810-1	2	1	BR	CH	19	39	40	SS	-	6,5	20	20,5		●	●
810-1 B80	2	1	BR	CH	19	39	40	SS	-	6,5	80	20,5		●	●
810-1	2	1	BR	CH	19	39	40	HS	CH	6,5	20	20,5		●	●



HS= case hardened steel

SS=stainless steel

BR=brass

CH=chrome plated

SECURITY GRADE EUROPEAN STANDARD EN 12320							
Requirements	1	2	3	4	5	6	
Minimum number of differs	300	1 000	2 500	5 000	10 000	20 000	
Pulling of shackle/staple	3	5	15	30	70	100	kN
Twisting of shackle/staple	40	100	200	450	1 200	2 500	Nm
Cutting of shackle/staple	6	15	25	35	70	100	kN
Blow on shackle/staple (weight/g x height/mm)			1 250 x 800	3 050 x 1 000	6 550 x 1 400	7 150 x 1 500	x 5
Test temperature			-20°C	-20°C	-40°C	-40°C	
Blow on lock body (weight/g x height/mm)			1 250 x 800	3 050 x 1 000	6 550 x 1 400	7 150 x 1 500	x 5
Test temperature			-20°C	-20°C	-40°C	-40°C	
Load on cylinder plug or locking mechanism			4	5	10	15	kN
Drilling				2	4	8	min
Sawing			1	2	4	8	min
Torque resistance of cylinder plug			5	15	20	30	Nm
Requirements	1	2	3	4	5		
SWEDISH PADLOCK CLASS SSF STANDARD							
Extra tests SSF padlock standard		1	2	3	4	5	
Lock picking and tampering		2 simple tools	2 simple tools	10 composite tools	10 composite tools	30 advanced tools	min
Attack with manual Tools				5	10	15	min