

ANCHOR LÅS

Certified High Security Padlocks. For use with "snowman" cylinder.

Padlock 802-2 B25 / B60 / B110

EN 12320 Grade 3



- An all-purpose padlock for tool boxes, lockers, trailers, power station switches.
- 46 mm solid chrome plated brass padlock.
- Hardened shackle. Shackle dia 8 mm.
- For use with "snowman" cylinder.
- Double locking hardened stainless steel ball bearing.
- Spring loaded shackle.
- The padlock can also be operated without spring/spring loaded shackle.



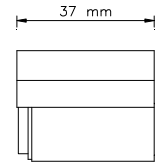
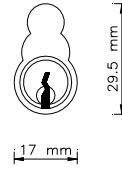
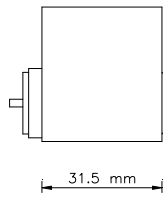
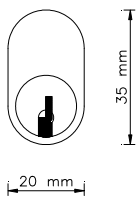
Certified by SBSC in Sweden.
Certificate No 04-598.

Padlock 802-2 B25 / B60 / B110 Stainless shackle

EN 12320 Grade 2



- An all-purpose padlock for tool boxes, lockers, trailers, power station switches.
- 46 mm solid chrome plated brass padlock.
- Stainless shackle. Shackle dia 8 mm.
- For use with "snowman" cylinder.
- Double locking hardened stainless steel ball bearing.
- Spring loaded shackle.
- The padlock can also be operated without spring/spring loaded shackle.



The ANCHOR LÅS High Security Padlock 840-4, 834-4 and 830-3 are made for use with oval cylinder.

The ANCHOR LÅS High Security Padlock 840-4 and 802-2 are made for use with "snowman" cylinder.

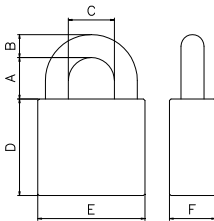
Model Number	EN Grade	Swedish Padlock Class	Body					Shackle					Keying	
			Material	Finish	Thickness mm (F)	Thickness mm (E)	Height mm (D)	Material	Finish	Diameter mm (B)	Clearance mm (A)	Clearance mm (C)	Oval cylinder	"Snow-man" cylinder
840-4	5	4	HS	CH	30	80	65	HS	CH	15	27	40	●	●
840-4 B50	5	4	HS	CH	30	80	65	HS	CH	15	50	40	●	●
834-4	4	3	HS	CH	25	60	94	HS	CH	11	28	28	●	
830-3	4	3	HS	CH	25	60	62	HS	CH	11	28	28	●	
830-3 B50	4	3	HS	CH	25	60	62	HS	CH	11	50	28	●	
802-2	3	2	BR	CH	20	46	61	HS	CH	8	25	24		●
802-2 B60	3	2	BR	CH	20	46	61	HS	CH	8	60	24		●
802-2 B110	3	2	BR	CH	20	46	61	HS	CH	8	110	24		●
802-2	2	1	BR	CH	20	46	61	SS	-	8	25	24		●
802-2 B60	2	1	BR	CH	20	46	61	SS	-	8	60	24		●
802-2 B110	2	1	BR	CH	20	46	61	SS	-	8	110	24		●

HS = case hardened steel

SS = stainless steel

BR = brass

CH = chrome plated



SECURITY GRADE EUROPEAN STANDARD EN 12320

Requirements	1	2	3	4	5	6	
Minimum number of differs	300	1 000	2 500	5 000	10 000	20 000	
Pulling of shackle/staple	3	5	15	30	70	100	kN
Twisting of shackle/staple	40	100	200	450	1 200	2 500	Nm
Cutting of shackle/staple	6	15	25	35	70	100	kN
Blow on shackle/staple (weight/g x height/mm)			1 250 x 800	3 050 x 1 000	6 550 x 1 400	7 150 x 1 500	x 5
Test temperature			-20°C	-20°C	-40°C	-40°C	
Blow on lock body (weight/g x height/mm)			1 250 x 800	3 050 x 1 000	6 550 x 1 400	7 150 x 1 500	x 5
Test temperature			-20°C	-20°C	-40°C	-40°C	
Load on cylinder plug or locking mechanism			4	5	10	15	kN
Drilling				2	4	8	min
Sawing			1	2	4	8	min
Torque resistance of cylinder plug			5	15	20	30	Nm
Requirements		1	2	3	4	5	

SWEDISH PADLOCK CLASS SSF STANDARD

Extra tests SSF padlock standard	1	2	3	4	5	
Lock picking and tampering	2 simple tools	2 simple tools	10 composite tools	10 composite tools	30 advanced tools	min
Attack with manual tools			5	10	15	min

Anchor Lås AB 2010/02

ANCHOR LÅS AB
Box 3050
SE-630 03 Eskilstuna
Sweden

Tel: +46 (0)16-125280
Fax: +46 (0)16-147923
E-mail: info@anchorlas.se
Internet: www.anchorlas.se